

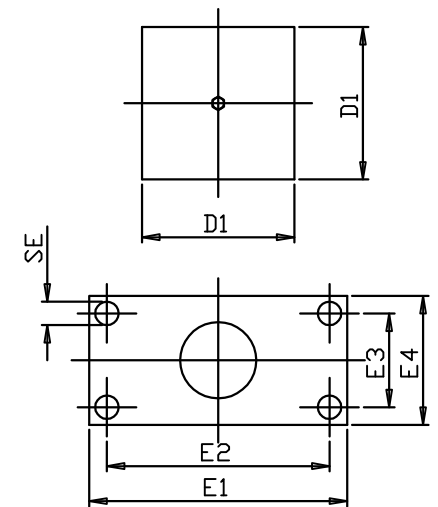
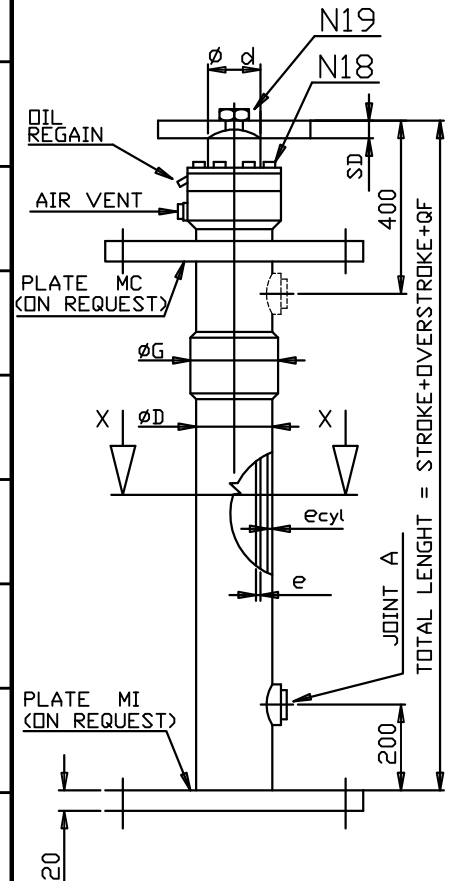
SEE HYDRAULIC POWER UNIT

A	M14x55																WEIGHT Kg							
	M12x45																							
	M10x45																							
	M30x60 Ch=46																							
	M24x70 Ch=36	235	/	3.6	101.6	7	15	64	-	6	5	50	60	70	80	85		90	99	100	110	120	130	150
	Q F	235	/	3.6	101.6	7	16	68	-	6	5	50	60	70	80	85		90	99	100	110	120	130	150
	øG	133	/	3.6	101.6	7	16	68	-	6	5	50	60	70	80	85		90	99	100	110	120	130	150
	e cyl	133	/	3.6	101.6	7	19	75	-	6	7.5	60	60	70	80	85		90	99	100	110	120	130	150
	øD	133	/	3.6	101.6	7	20	79	11	7	5	70	70	80	85	90		99	100	110	120	130	150	
	OIL lxm	235	/	3.6	101.6	7	20	79	11	7	5	70	70	80	85	90		99	100	110	120	130	150	
		235	133	4	114.3	9	20	79	11	7	5	70	70	80	85	90		99	100	110	120	130	150	
		235	133	4	114.3	9	21	83	13	7	5	70	70	80	85	90		99	100	110	120	130	150	
		235	133	4	114.3	9	21	83	13	7	5	70	70	80	85	90		99	100	110	120	130	150	
		235	133	4	114.3	9	23	88	10	7	7.5	70	70	80	85	90		99	100	110	120	130	150	

-PLATES "MC" AND "MI" ARE IDENTICAL
-ROD UPPER PLATE IS OF OSCILLATING TYPE

-FULLY EXTENDED RAM WITH SLOWING BUFFER 35 mm
-NB: JOINT "A" DOWN (UP ON REQUEST)

ROD Dia	D1	S D	E1	E2	E3	E4	SE
50/60	150	25	300	250	80	130	22
70	150	25	300	250	90	140	22
80/85	150	25	300	250	110	160	22
90	150	25	300	250	120	170	22
100	150	25	300	250	120	180	22
110/120	200	25	400	350	150	200	22
130	200	25	400	350	160	220	22
150	200	25	400	350	200	250	22



SECTION X-X

NOTE

MORIS ITALIA PRESCRIBES THE ADOPTION OF THE RAM PROTECTION RING,
 - FOR SINGLE PIECE RAMS WITH LENGHT GREATER THAN 4,5 m FOR DIAMETERS FROM 70 mm TO 90 mm,
 - FOR SINGLE PIECE RAMS WITH LENGHT GREATER THAN 5 m FOR DIAMETER OF 100 mm,
 - FOR SINGLE PIECE RAMS WITH LENGHT GRATER THAN 6 m FOR DIAMETERS FROM 110 mm TO 130 mm,
 IN ORDER TO AVOID BUMPS AND DAMAGE DURING THE TRASPORT.

UT		DATE	10/18
			DATE
		DWG. Nr	9140
			DIRECT SIDE ACTING 1 : 1 RAM